

A PLAT OF VILLAGE SHOPPES AT THE DOWNS

SEPTEMBER, 1986
PARCEL 12A

BEING PLAT NO. 25, MARTIN DOWNS P.U.D.
LYING IN SECTION 13,
TOWNSHIP 38 SOUTH, RANGE 40 EAST
MARTIN COUNTY, FLORIDA

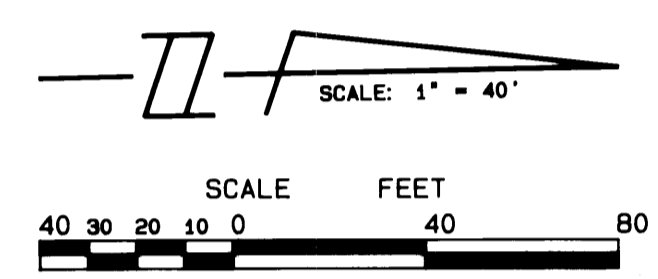
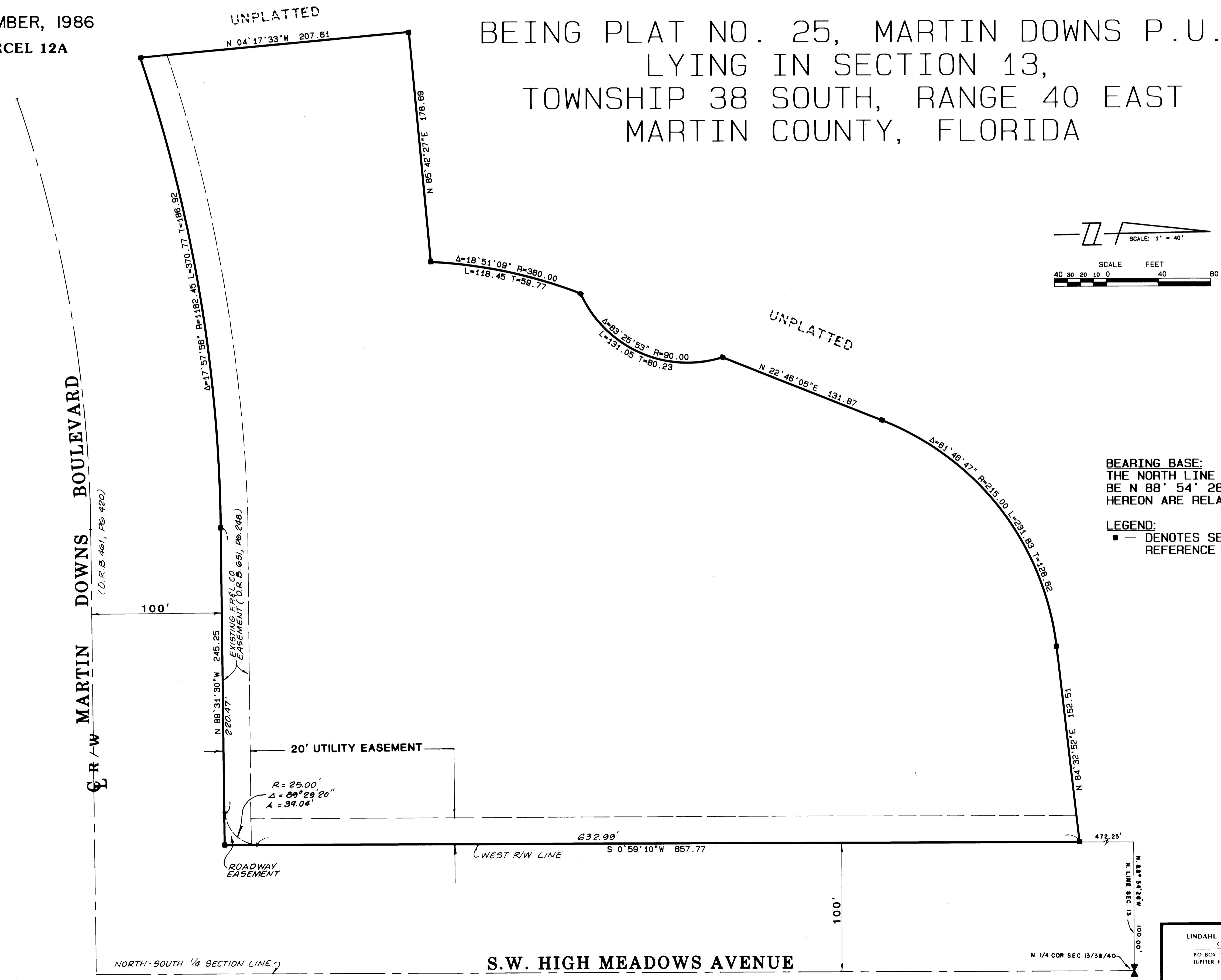
I, Louise V. Isaacs,
Clerk of the Circuit
Court of Martin County,
Florida, hereby certify
that this Plat was filed
for record in Plat Book
10, Page 65, Martin
County, Florida, Public
Records, this day
of _____, 1986.

Louise V. Isaacs, Clerk
Circuit Court
Martin County, Florida

By: _____
Deputy Clerk

File No. _____

(Circuit Court Seal)



BEARING BASE:
THE NORTH LINE OF SECTION 13 IS TAKEN TO
BE $N 88^{\circ} 54' 28'' W$, AND ALL BEARINGS SHOWN
HEREON ARE RELATIVE THERETO.

LEGEND:
■ DENOTES SET P.R.M. (PERMANENT
REFERENCE MONUMENT)

LINDAHL, BROWNING, FERRARI & HELLSTROM, INC. Consulting Engineers, Planners & Surveyors		2	2
P.O. BOX "Z" JUPITER, FLORIDA 33458	10 CENTRAL PARKWAY SUITE 420 STUART, FLORIDA 33499		